

NATURAL ORIGIN Specialties

North America Program



Kobo offers a wide range of specialty ingredients for the benefit of personal care formulations including Binders, Fillers, Fibers, Gellants, and Scrubbing Beads.



Kobo's Definition of Natural Origin

Kobo defines natural origin products as ingredients that are naturally derived which are likely to have undergone chemical or mechanical processing to make them commercially viable ingredients.

We offer a wide range of ingredients, such as Surface Treatments, Pigmentary Dispersions, Sunscreen Technologies, Microspheres and Specialties, of natural origin, mineral or plant-based in particular.

We have chosen to certify many of them with ECOCERT/COSMOS.

Natural Index (NI) / Natural Origin Index (NOI) following the ISO 16128 standard is available upon request.

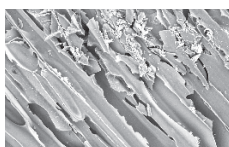
Active Ingredients

INULIN-SC is a natural, multi-functional active with a moisturizing effect on the skin and texture enhancer in formulations.

Name	INCI Name	NI/NOI
INULIN-SC 	<i>Inulin</i>	1 / 1

Charcoal

Absorbent Charcoal Powder available as a powder or an aqueous dispersion; gives absorbency properties to formulas.



CHARCOAL POWDER

Name	INCI Name	NI/NOI
Powders		
CHARCOAL POWDER	<i>Charcoal Powder</i>	0 / 1
Dispersions		
WD-VCB25	<i>Water (And) Charcoal Powder (And) Polyglyceryl-10 Stearate (And) Polyglycerin-10 (And) Polyglyceryl-10 Myristate (And) Sodium Dehydroacetate (And) Citric Acid</i>	0.65 / 0.99

Emulsifier

Plant-based, PEG-free, W/O emulsifier, which provides light and silky-smooth non-greasy feel. Good for cold process.

Name	INCI Name	NI/NOI
MAKIBASE SEB ALT	<i>Polyglyceryl-3 Polyricinoleate (And) Polyglyceryl-3 Diisostearate</i>	0 / 1

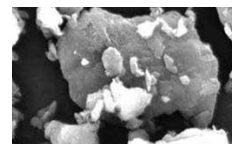
Esters

Plandool™ are plant derived esters, with a range of melting points, consistencies and refractive indexes. They provide moisture retention to skin care, make-up and hair care products, add gloss and have high pigment dispersion ability. LUSPLAN™ : Plant-derived lanolin oil replacement that can be used as base oil in a wide range of applications; adds gloss.

Name	INCI Name	NI/NOI
Plandool™-G (Non-GMO)	<i>Bis-Behenyl/Isostearyl/Phytosteryl Dimer Dilinoleyl Dimer Dilinoleate</i>	0 / 1
Plandool™-H	<i>Phytosteryl/Isostearyl/Cetyl/Stearyl/Behenyl Dimer Dilinoleate</i>	0 / 1
Plandool™-LG1	<i>Phytosteryl/Behenyl/Octyldodecyl Lauroyl Glutamate</i>	0 / 1
Plandool™-LG2	<i>Phytosteryl/Octyldodecyl Lauroyl Glutamate</i>	0 / 1
Plandool™-LG3	<i>Phytosteryl/Behenyl/Octyldodecyl Lauroyl Glutamate</i>	0 / 1
Plandool™-LG4	<i>Phytosteryl/Behenyl/Octyldodecyl Lauroyl Glutamate</i>	0 / 1
Plandool™-PM	<i>Phytosteryl Macadamiate</i>	0 / 1
LUSPLAN™ DD-DA5 (Non-GMO)	<i>Dimer Dilinoleyl Dimer Dilinoleate</i>	0 / 1
LUSPLAN™ DD-DA7 (Non-GMO)	<i>Dimer Dilinoleyl Dimer Dilinoleate</i>	0 / 1

Fibers (Bulking)

Light and bulky ground fiber with high oil absorption and soft focus capability.



Name	INCI Name	NI/NOI
SILK COTTON PW	<i>Ceiba Pentandra Fiber Powder</i>	1 / 1

KOBO

USA

BRASIL

UK

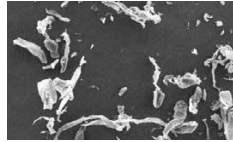
FRANCE

ASIA PACIFIC

Fibers (Mascara)

Rayon is a polymer of Natural Origin derived from Cellulose. These fibers provide lashes extension and volume and are easy to disperse

CELL-U-LASH™ fibers are made of cellulose. They are hydrophilic and disperse easily in the initial water phase of an emulsion.



CELL-U-LASH™ 150

Name	INCI Name	NI/NOI
RAYON FIBER 3.3T-0.8MM(S)	Rayon (And) Silica	0 / 0.84
New RFW-15D-3	Rayon (And) Silica	0 / 0.99
CELL-U-LASH™ 40	Cellulose	0 / 1
CELL-U-LASH™ 90	Cellulose	0 / 1
CELL-U-LASH™ 150	Cellulose	0 / 1

Fillers

Fillers used in emulsions, hot pours, and powders found in Skin Care, Color Cosmetics and Toiletry products. They contribute to a finished product by adding bulking properties, an enhanced skin feel, luster, shimmer, shine and often times sheen, while helping to fill in the lines on the skin so they appear less visible. They are also available surface treated.

Name	INCI Name	NI/NOI
MST MAKIGREEN CORN S	Zea Mays (Corn) Starch (And) Magnesium Stearate	0.95 / 0.99
KoboMica Y-08	Mica	1 / 1
KoboMica L-24	Mica	1 / 1
KoboMica S-25	Mica	1 / 1
KoboMica L-27	Mica	1 / 1
Sericite GMS-4C	Mica	1 / 1
New FSL-CSO-NJE5	Calcium Starch Octenylsuccinate (And) Mica (And) Jojoba Esters	0.38 / 0.95
New BCC-CSO-NJE4	Calcium Starch Octenylsuccinate (And) Calcium Carbonate (And) Jojoba Esters	0 / 0.92

Film Formers and Rheology Modifiers

Natural and Natural Origin Ingredients, soluble either in oils (3000 series) or in water (PXF)



KOBOGUARD® NATURAL PXF

Name	INCI Name	NI/NOI
New KOBOGUARD® NATURAL PXF	Water (Aqua) (And) Pullulan (Pullulan) (And) Glycerin (And) Cellulose (And) Xanthan Gum (And) Methylglucamine	0.85 / 0.99
New KOBOGUARD® NATURAL 3000-CCT70	Glyceryl Hydrogenated Rosinate (And) Caprylic/Capric Triglyceride	0 / 1
New KOBOGUARD® NATURAL 3000-NDA70	Glyceryl Hydrogenated Rosinate (And) C9-12 Alkane	0 / 1



C Raw materials approved by COSMOS

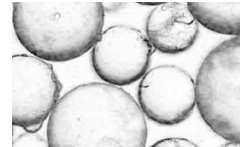
Gellants

Fumed Silica dispersions are pre-dispersed high purity silica homogenized in a range of natural oils, which provide easily manageable and dust free gellants for oil phases and anhydrous formulas.



CO15M5

Name	INCI Name	NI/NOI
CO15M5	Ricinus Communis (Castor) Seed Oil (And) Silica	0.85 / 1
JOS10M5	Simmondsia Chinensis (Jojoba) Seed Oil (And) Silica	0.9 / 1
New GC7M5	Silica (And) Caprylic/Capric Triglyceride	0 / 1



KoboScrub™ SD-200

Scrubbing Beads

Natural spherical beads that are used primarily for exfoliation.

Name	INCI Name	NI/NOI
CELLULOBEADS D-200	Cellulose	0 / 1
KoboScrub™ SD-200 C	Silica	0 / 1

Surfactant

Combination of vegetable-origin surfactants.

Name	INCI Name	NI/NOI
MAKIGREEN LCS+	Caprylyl/Capryl Glucoside (And) Polyglyceryl-10 Isostearate (And) Sodium Dilauramidoglutamide Lysine	0 / 1

Specialty Pigments - Iron Oxides

Provides deep, black shade. Primarily used in mascara.

Name	INCI Name	NI/NOI
New BLACK JB C	Iron Oxides (CI 77499)	0 / 1

Pigmentary ZnO - TiO₂ Alternative

For customers who prefer to avoid using Titanium Dioxide as a pigment, we have developed a new Zinc Oxide, a particularly opaque grade, available surface-treated.

Name	INCI Name	NI/NOI
New ZnO-PCC-ASGP4 C	Zinc Oxide (And) Stearoyl Glutamic Acid (And) Polyhydroxystearic Acid	0 / 1
New ZnO-PCC-NJE3 C	Zinc Oxide (And) Jojoba Esters	0 / 1

Waxes

Used to stabilize and thicken emulsions; provides smooth, velvety skin feel.

Name	INCI Name	NI/NOI
New MAKIGREEN VELVET WAX	Vegetable Oil (And) Oryza Sativa (Rice) Bran Oil (And) Oryza Sativa (Rice) Bran Wax (And) Rhus Succedanea Fruit Wax (And) Helianthus Annuus (Sunflower) Seed Oil	0.69 / 0.99

KOBO

Ingredients of Natural Origin

www.koboproducts.com