

Fibers

USA & Canada Program

Kobo offers a variety of natural and synthetic fibers in different lengths, thicknesses and shapes. They can be used to promote texturizing, soft focus, lengthening and volumizing effects in finished products.



Natural Origin Fibers

CELL-U-LASH™ fibers are made of *cellulose*, a natural polymer, and vary in length from 20µm to 110µm; they are hydrophilic and disperse easily in the initial water phase of an emulsion. These fibers are an excellent choice for finished products containing natural ingredients.

RAYON FIBERS are based on a polymer of Natural Origin *derived from Cellulose*. They are available in 2 sizes (0.8, 2 and 3 mm) and provide lash extension, volume, good adhesion to lashes and are easy to disperse.

Nylon Fibers

Synthetic *Nylon* fibers are commonly used in mascara and eyebrow products for lengthening and volumizing effects.

Polypropylene Fibers

Synthetic fibers made from *Polypropylene* can be used for lengthening and volumizing effects in mascara and eyebrow products or to achieve a soft focus effect in powders, color and skin care emulsions, and lipsticks.

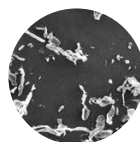
Trade Name	INCI Name	Length	Diameter	Shape	Color	Notes
<i>Natural Origin</i>						
CELL-U-LASH™ 40	Cellulose	20-25µm	1-2µm	Conventional Fiber Strands	White	Natural; Hydrophilic; Volumizing; Soft Focus
CELL-U-LASH™ 90		60-75µm				Natural; Hydrophilic; Lengthening
CELL-U-LASH™ 150		80-110µm				
RAYON FIBER 3.3T-0.8MM(S)	Rayon (And) Silica	0.64-0.88 mm	3.3 Decitex	Unique "Cloud" Shape	White	Volumizing and Lengthening
RFW-15D-3	Rayon (And) Silica	3 mm	15 Denier	Round		
SILK COTTON PW	Cellulose	Diameter: 8.8µm Thickness: 1-2µm		Fine Powder Flake Shaped	White to Yellow	Natural; Light/Bulky; High Oil Absorption; of the Silk Cotton Tree
<i>Nylon</i>						
NYLON-66 FIBER 20D	Nylon-66 (And) Titanium Dioxide	2mm	20 Denier	Fibrous Powder of Uniform Length	White to Yellow	Synthetic
KNY-3D		1.2mm	3 Denier	Fiber of Uniform Length	White	
N-6 ARCH 3.3T1	Nylon-6	0.8-1.1 mm	3.3 Decitex	Fiber; Triangular with Round Edge Cross Section	White	Synthetic; Volumizing, Long Lash and Cur
N-6 ARCH 3.3T2		1.6-2.2 mm				
<i>Polypropylene</i>						
PP FIBER 6D05	Polypropylene (And) Silica	0.5mm	5.6 Denier	Short Fibers	White	Synthetic
PP FIBER 6D2		2mm				



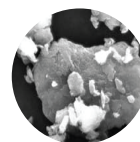
SEM Image:
KNY-3D



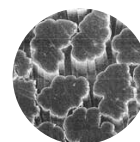
SEM Image:
N-6 ARCH 3.3T2



SEM Image:
CELL-U-LASH™ 150



SEM Image:
SILK COTTON PW



SEM Image:
RAYON FIBER
3.3T-0.8MM(S)

KOBO

USA

BRASIL

UK

FRANCE

ASIA PACIFIC

Colored Nylon Fibers

Colored Nylon Fibers containing Carbon Black, Black Iron Oxide or Brown Iron Oxide are available. They are especially effective in promoting lengthening properties in Mascara and Eyebrow products while contributing to and enhancing the overall color effect of the product.

Trade Name	INCI Name	Length	Diameter	Shape	Color	Notes
NFCB-10D-2R	Nylon-6 (And) Silica (And) Black 2	2mm	10 Denier	Short Fiber; Round Cross Section	Black	Synthetic; FDA Certified Carbon Black
NFCB-10D-2T				Short Cut Form		Synthetic; FDA Certified Carbon Black
NFCB-10D-4R	Nylon-6 (And) Black 2 (And) Silica	4mm	17 Denier	Short Fiber; Round Cross Section		Synthetic; FDA Certified Carbon Black
NFCB-17D-4T	Nylon-6 (And) Black 2			Short Fiber; Triangular Cross Section		Synthetic; FDA Certified Carbon Black
NFBL-10D-2R	Nylon-6 (And) Iron Oxides (CI 77499)(And) Triethoxycaprylylsilane (And) Silica	2mm	10 Denier	Short Fiber; Round Cross Section	Black	Synthetic
NFBL-10D-2T				Short Fiber; Triangular Cross Section		Synthetic
NFBL-10D-4R		4mm		Short Fiber; Round Cross Section		Synthetic
NFBR-10D-2R	Nylon-6 (And) Iron Oxides (CI 77499) (And) Iron Oxides (CI 77491) (And) Iron Oxides (CI 77492) (And) Silica	2mm	10 Denier	Short Fiber; Round Cross Section	Brown	Synthetic
NFBR-10D-2T				Short Fiber; Triangular Cross Section		Synthetic



KMU-023B

Natural Eyebrow Filler

Part 1			
● MICA S-ASG3 - Kobo Products: Mica (And) Stearoyl Glutamic Acid	15.65%	● Polyaldo™ 10-1-0 K FG - Lonza: Polyglyceryl-10 Oleate	1.00%
● ZnO-C-ASG3J - Kobo Products: Zinc Oxide (And) Stearoyl Glutamic Acid	15.65%	● Lexgard® Natural - Inolex Chemical Company: Glyceryl Caprylate (And) Glyceryl Undecylenate	0.40%
● BBO-ASG3 - Kobo Products: Iron Oxides (CI 77499) (And) Stearoyl Glutamic Acid	9.04%	Part 4	
● MSS-500W - Kobo Products: Silica	7.87%	● CELL-U-LASH™ 40 - Kobo Products: Cellulose	1.00%
● BRO-ASG3 - Kobo Products: Iron Oxides (CI 77491) (And) Stearoyl Glutamic Acid	5.50%		
● BYO-ASG3 - Kobo Products: Iron Oxides (CI 77492) (And) Stearoyl Glutamic Acid	3.14%		
Part 2			
● Protachem™ CTG - Protameen: Caprylic/Capric Triglyceride	18.37%		
● Cetiol® CC - Cognis Corp.: Dicaprylyl Carbonate	7.60%		
● SunBoost ATB Natural - Kobo Products: Argania Spinosa Kernel Oil (And) Tocopheryl Acetate (And) Bisabolol	4.75%		
● COSMOL™ 43V - Ikeda: Polyglyceryl-2 Triisostearate	3.63%		
● Plandool™-LG1 - Nippon/Kobo Products: Phytosteryl/Behenyl/Octyldodecyl Lauroyl Glutamate	1.00%		
● Carnauba Wax SP 63P - Strahl & Pitsch: Copernicia Cerifera (Carnauba) Wax	0.40%		
Part 3			
● Vegelight™ 1214 LC - Grant Industries, Inc.: Coconut Alkanes (And) Coco-Caprylate/Caprates	5.00%		

Manufacturing Procedure

1. Blend Part 1.
2. Heat Part 2 to 80°C under propeller agitation.
3. Slowly add Part 1 to Part 2 under prop mixer and start to gradually cool.
4. Slowly add Parts 3 and 4, respectively, to Parts 1 and 2 at 45°C.

Description

This natural eyebrow filler features Kobo's ASG treated fillers and pigments which help to impart color, payoff and adhesion to brows. Kobo's silica microsphere, MSS-500W, provides payoff and glide during application. SunBoost ATB Natural is a proprietary ratio of anti-oxidant, anti-irritant and anti-inflammatory agents that nourishes brows. Kobo's cellulose fiber, CELL-U-LASH™ 40, fills in brows making them appear more even and covers sparse areas. Plandool™-LG1 improves malleability of the wax complex which increases bulk transfer to the brow.



KMA-083A

Natural Conventional Mascara

Part 1			
● Carnauba Wax SP 63P - Strahl & Pitsch: Copernicia Cerifera (Carnauba) Wax	11.00%		
● Montanov™ 68 - Seppic: Cetearyl Alcohol (and) Cetearyl Glucoside	5.50%		
● Beeswax White Sp 422P - Strahl & Pitsch: Beeswax	5.50%		
● Candelilla Wax SP75 - Strahl & Pitsch: Candelilla wax	2.20%		
Part 2			
● Deionized Water - Water	16.15%		
● BLACK NF - Kobo Products: Iron Oxides (CI 77499)	8.37%		
● Zemea® - Du Pont & Tate: Propanediol	1.78%		
● Keltrrol® CG - CP Kelco: Xanthan Gum	0.18%		
Part 3			
● Deionized Water - Water	36.05%		
● Natpure® Film AP - Sensient Cosmetic Technologies: Pullulan (and) Sorbitol (and) Trehalose (and) Acacia Senegal Gum	3.57%		
● Plantaren® 1200 N UP - BASF: Lauryl Glucoside	0.45%		
Part 4			
● MSS-500W - Kobo Products: Silica	2.65%		
● KoboMica S-25 - Kobo Products: Mica	2.65%		
● ImerCare® 08K(S) - Imerys: Kaolin	2.65%		
Part 5			
● RAYON FIBER 3.3T-0.8MM(S) - Nikko/Kobo Products: Rayon (And) Silica	1.00%		
Part 6			
● AE Preserve® PCG - AE Chemie: Phenethylalcohol (And) Caprylhydroxamic Acid (And) Glycerin	0.30%		

Manufacturing Procedure

Oil Phase:

1. Heat Part 1 to 85°C in a side beaker, while mixing with a spatula.

Grind Phase:

2. Prepare Part 2 in a side beaker. Pre-mix Keltrrol® CG with Zemea® and add DI Water. Start propeller mixing. After 5 minutes, add BLACK NF. Move grind to homogenizer and homogenize until pigment is fully dispersed.

Water Phase: (main beaker)

3. Start preparing Part 3 in the main beaker. Combine DI Water with Plantaren® 1200N UP and NatPure® Film AP. Start heating to 80° - 85°C under propeller mixer. Keep tightly covered.
4. Add Part 2 to the main beaker.
5. Add Part 4 to the main beaker.
6. Once water phase and oil phase reach 85°C, begin emulsifying. Add oil phase to the main beaker and emulsify under propeller mixer for 15 minutes off heat.
7. Begin the air cooling process. Slowly add Part 5 to the main beaker.
8. Add Part 6 to the main beaker at 30°C. Stop mixing at 28°C.

Description

Natural Conventional Mascara adds volume, length and a deep black finish to the lashes. RAYON FIBER 3.3T-0.8MM(S), with its unique "cloud" shape, volumizes and lengthens the lashes. The combination of KoboMica S-25 and MSS-500W provides thickness, definition and body. BLACK NF provides the deep black color.