

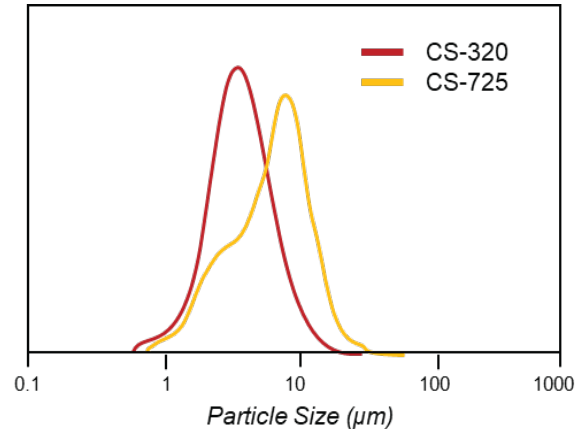
# Excebeads™ CS



## Natural-Origin, Non-Porous, Spherical Fused Silica Microspheres

Spherical fused silica microspheres, EXCEBEADS™ are non-porous with a smooth surface and a narrow particle size distribution. They are available in two particle sizes (CS-320 - Avg Size: 3.5 µm and CS-725 - Avg Size: 7.0 µm) for different effects in formulation. They offer a smooth and silky feel, help provide a soft focus effect to the skin, and serve as a high-performing alternative to plastic beads.

Particle Size Distribution



### Silky Smooth Feel

Highly spherical particles with narrow particle size distribution provide a silky smooth skin feel

### Soft Focus Effect

Optically reduce the visibility of wrinkles and pores

### Microplastic Replacement

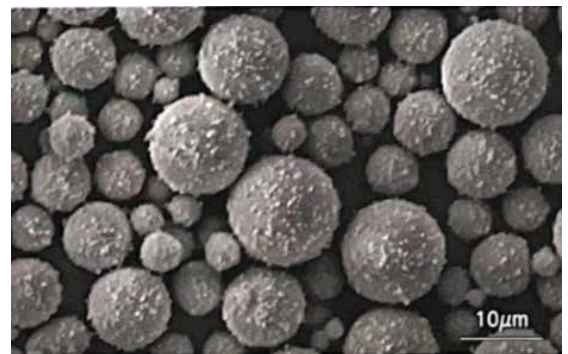
Kobo Application Lab study found EXCEBEADS™ to be a good match to PMMA microspheres in formulation (low oil absorption, hardness, pressability, payoff)

### Volumizing Effect

Non-porous particles increase volume without affecting viscosity

Product Name	EXCEBEADSP CS-320	EXCEBEADSP CS-725
INCI Name	Silica	Silica
Average Particle Size (µm)	3.5	7.0
Specific Surface Area (ml/g)	1.6	1.6
Oil Absorption (ml/100g)	< 30	< 30

SEM Picture



**KOBO**

USA  
New Jersey

BRASIL  
São Paulo

UK  
Abingdon

FRANCE  
Labege

ASIA PACIFIC  
Tokyo

**TOKUYAMA**



## KLF-335 Blur Foundation

### Part 1

• Deionized Water - Water	40.00%
• GLW75PFSP - Kobo Prods: Titanium Dioxide (And) Water (And) Glycerin (And) Sodium Polyacrylate (And) Cellulose Gum	6.00%
• GLW45GYSP - Kobo Products: Iron Oxides (CI 77492) (And) Water (And) Glycerin (And) Sodium Polyacrylate (And) Cellulose Gum	2.00%
• GLW55GRSP - Kobo Products: Iron Oxides (CI 77491) (And) Water (And) Glycerin (And) Sodium Polyacrylate (And) Cellulose Gum	1.00%
• GLW60GBSP - Kobo Products: Iron Oxides (CI 77499) (And) Water (And) Glycerin (And) Sodium Polyacrylate (And) Cellulose Gum	0.10%

### Part 2

• Glycerin U.S.P. Natural 96% - Ruger Chemical: Glycerin	6.50%
• Veegum® HV - R.T. Vanderbilt: Magnesium Aluminum Silicate	0.40%
• Liponate® ISA - Vantage: Isostearic Acid	0.10%
• Keltrol® CG - CP Kelco: Xanthan Gum	0.10%

### Part 3

• Protachem™ CTG - Protameen: Caprylic/Capric Triglyceride	15.00%
• Elefac I-205 - Alzo International Inc.: Octyldodecyl Neopentanoate	11.60%
• Lipo® GMS-450 - Vantage: Glyceryl Stearate	1.80%
• Lipocol® S - Vantage: Stearyl Alcohol	1.50%
• Lanette® 22 - BASF: Behenyl Alcohol	1.20%
• Xiameter® PMX-200 Silicone Fluid 5CS - Dow Chemical: Dimethicone	0.90%
• Lipomulse® Luxe - Lipo Chemicals: Cetearyl Alcohol (And) Glyceryl Stearate (And) PEG-40 Stearate (And) Cetareth - 20	0.60%
• Lipowax® D - Vantage: Cetearyl Alcohol (And) Cetareth-20	0.30%

### Part 4

• SymDiol® 68 - Schulke: 1,2-Hexanediol (And) Caprylyl Glycol	0.90%
---	-------

### Part 5

• EXCEBEADS™ CS-320 - Tokuyama Corp./Kobo Products: Silica (Silca)	10.00%
--	--------

### Manufacturing Procedure

1. Combine Part 1 - homogenize until fully developed.
2. In a separate beaker combine Part 2 using a prop mix. Continue mixing until it is fully dispersed.
3. Add part 2 to part 1. Continue mixing until uniform. Start heating to 80°C.
4. Slowly add part 3 to parts 1 and 2 using a homogenizer at 80°C while mixing. Ensure full homogenization before adding parts 4 and 5.
5. Cool batch to 50°C then slowly add part 4, followed by part 5 to batch.
6. Continue cooling batch to 45°C then pour into components.

### Description

A full coverage, yet lightweight liquid foundation that blurs skin imperfections for a flawless finish. Blur Foundation features EXCEBEADS™ CS-320 is a high purity, non-porous, spherical fused silica microsphere; it provides a smooth and silky feel, helps provide a soft focus effect to the skin and serves as a high performing alternative to plastic beads. It applies smoothly, leaving a nice non-oily feel on the skin. Sheer coverage is produced by Kobo's GLW pigmentary dispersions. GLW dispersions are added into the water phase.



## KPP-139 Pressed Powder Make Up

### Part 1

• SERICITE GMS-4C - Kobo Prods: Mica	70.28%
• EXCEBEADS™ CS-725 - Tokuyama Corp./Kobo Products: Silica	10.00%
• RBTD-671-NJE2 - Kobo Products: Titanium Dioxide (And) Jojoba Esters	7.00%
• MAGNESIUM MYRISTATE - Kobo Products: Magnesium Myristate	2.00%
• BYO-NJE3 - Kobo Products: Iron Oxides (CI 77492) (And) Jojoba Esters	1.00%
• BRO-NJE2 - Kobo Products: Iron Oxides (CI 77491) (And) Jojoba Esters	0.86%
• BBO-NJE2 - Kobo Products: Iron Oxides (CI 77499) (And) Jojoba Esters	0.46%

### Part 2

• JOJOBA OIL - Vantage: Simmondsia Chinensis (Jojoba) Seed Oil	7.50%
• Lexgard® E - Inolex Chemical Company: Ethylhexylglycerin	0.50%
• Mikrokill® COS - Arch Chemicals, Inc: Phenoxyethanol (And) Chlorphenesin (And) Caprylyl Glycol	0.40%

### Manufacturing Procedure

1. Add Part 1 and micropulverize until color is fully developed.
2. Add Part 2 and blend until uniform.
3. Press at 750 psi.

### Description

This Pressed Powder formula is perfect for a natural looking complexion. It features SERICITE GMS-4C, which provides good spreadability and a smooth application. Kobo's patented Natural Jojoba Ester-treated pigments (NJE) provide great adherence to the skin. Magnesium Myristate works as a dry binder due to its' good pressability properties. EXCEBEADS™ CS-725 is a high purity, non-porous, spherical fused silica microsphere; it provides a smooth and silky feel, helps provide a soft focus effect to the skin and serves as a high performing alternative to plastic beads.