

Kobo Featured Products

RAQCA 2016

KOBO

www.koboproducts.com



elipse s.r.l.



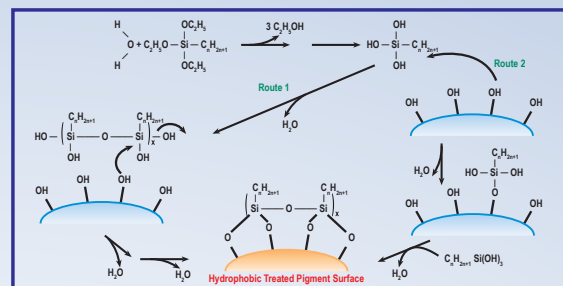
Color Cosmetics

Pigments - Treatments

Lipophilic Treatment

Isopropyl Titanium Triisostearate (ITT)

- Highly Lipophilic
- Allows High Pigment Loading in Esters, Mineral Oils or Hydrocarbons
- Improves Compressibility in Pressed Powders and Reduces Breakage
- Excellent Affinity to the Skin
- Creamy Skin Feel
- US Patent # 4,877,604



Silicone Treatment

Triethoxycaprylylsilane (11S)

- Hydrophobic and Lipophilic
- Compatible in Esters, Minerals Oils and Silicone Fluids
- Stable at pH 3
- No Hydrogen Potential; No Residual Methanol
- Good Spreadability
- Creamy, Wet Feeling

Anhydrous Cream-to-Powder Concealer featuring ITT-Treated Pigments

Formula KCP-018

Part	Percent	Ingredients	INCI Name	Supplier
1	15.00	ASO-I2	Aluminum Starch Octenylsuccinate (And) Isopropyl Titanium Triisostearate	Kobo Products
	12.99	BTD-401	Titanium Dioxide (And) Isopropyl Titanium Triisostearate	Kobo Products
	6.25	SERICITE GMS-4C	Mica	Kobo Products
	2.00	MSS-500/3	Silica	Kobo Products
	0.33	BRO-I2	Iron Oxides (C.I. 77491) (And) Isopropyl Titanium Triisostearate	Kobo Products
	0.33	BYO-I2	Iron Oxides (C.I. 77492) (And) Isopropyl Titanium Triisostearate	Kobo Products
	0.10	BBO-I2	Iron Oxides (C.I. 77499) (And) Isopropyl Titanium Triisostearate	Kobo Products
2	18.00	Liponate® EHP	Ethylhexyl Palmitate	Vantage
	11.00	ELEMENT14 PDMS 5-A	Dimethicone	Momentive
	6.50	Squalane NF	Squalane	Barnet Products Corp.
	5.50	Lameform® TGI	Polyglycerol-3 Diisostearate	Cognis Corp.
	4.00	Microcrystalline Wax SP-89	Microcrystalline Wax	Strahl & Pitsch, Inc.
	3.00	Mineral Oil Carnation	Mineral Oil	Ruger Chemical Co., Inc.
	2.00	Softisan® 100	Hydrogenated Coco-Glycerides	Sasol
	1.00	Carnauba Wax SP 63P	Copernicia Cerifera (Carnauba) Wax	Strahl & Pitsch, Inc.
3	12.00	SP-500	Nylon-12	Toray/Kobo Products
100				

Description:

This cream-to-powder concealer covers imperfections and immediately gives a powder base so foundation can be applied over it. Kobo's **BTD-401** gives high coverage. A combination of Kobo's **SERICITE GMS-4C** and **ITT-Treated starch and pigments** provides the basis for the cream-to-powder texture. A combination of Kobo's **Microspheres, MSS-500/3** and **SP-500**, gives a glide-on application and helps to provide soft focus.

Luminous Compact Foundation

Formula KPP-084-EU

Part	Percent	Ingredients	INCI Name	Supplier
1	55.60	TALC AJM	Talc	Kobo Products
	30.00	SERICITE GMS-4C	Mica	Kobo Products
	0.50	Microcare® PPD	Talc (And) Phenoxyethanol (And) Decylene Glycol (And) Hydrated Silica	Thor Personal Care
2	7.95	TiO2 FX-50-I2	Titanium Dioxide (And) Aluminum Hydroxide (And) Isopropyl Titanium Triisostearate (And) Iron Oxides (C.I. 77491)	Kobo Products
	0.60	BYO-I2	Iron Oxides (C.I. 77492) (And) Isopropyl Titanium Triisostearate	Kobo Products
	0.35	BRO-I2	Iron Oxides (C.I. 77491) (And) Isopropyl Titanium Triisostearate	Kobo Products
	0.20	BBO-I2	Iron Oxides (C.I. 77499) (And) Isopropyl Titanium Triisostearate	Kobo Products
3	1.60	DUB PO	Ethylhexyl Palmitate	Stearinerie Dubois
	1.60	CSF-3100@50cSt	Dimethicone	NuSil
	1.60	CSF-3100@350cSt	Dimethicone	NuSil

100

Description:

This luminous compact foundation features Kobo's TALC AJM, an odorless, fine powder with anti-caking properties and a nice feel. SERICITE GMS-4C is added to give a glide-on application. TiO₂ FX-50-I2 is a yellow pigmentary TiO₂, that gives a unique effect to facial products, avoiding a grey/whitening effect. Kobo's ITT treated pigments provide color, with good adhesion and pressability properties.

Powdery Finish Primer

Formula KFL-087

Part	Percent	Ingredients	INCI Name	Supplier
1	43.00	CXG-1103	Cyclopentasiloxane (And) Cyclohexasiloxane (And) Dimethicone/Vinyl Dimethicone Crosspolymer	NuSil/Kobo Products
2	10.00	NIKKOSPHERE-ACH	Aluminum Chlorohydrate	Nikko/Kobo Products
	10.00	BPD-500	HDI/Trimethylol Hexyllactone Crosspolymer (And) Silica	Kobo Products
	6.00	GMS-11S2	Mica (And) Triethoxycaprylylsilane	Kobo Products
	5.00	ELIGHT SDS	Dimethicone/Vinyl Dimethicone Crosspolymer (And) Silica (And) Dimethicone	Bo-Kwang/Kobo Products
	0.48	BTD-11S2	Titanium Dioxide (And) Triethoxycaprylylsilane	Kobo Products
	0.25	BYO-11S2	Iron Oxides (C.I. 77492) (And) Triethoxycaprylylsilane	Kobo Products
	0.04	BRO-11S2	Iron Oxides (C.I. 77491) (And) Triethoxycaprylylsilane	Kobo Products
	0.01	BBO-11S2	Iron Oxides (C.I. 77499) (And) Triethoxycaprylylsilane	Kobo Products
3	11.25	Permethyl® 99A	Isododecane	Presperse
4	5.72	KOBOGUARD® 5400 IDD	Hydrogenated Polycyclopentadiene (And) Isododecane	Kobo Products
5	0.50	Botanistat PF-64	Phenoxyethanol (and) Caprylyl Glycol (and) Ethylhexylglycerin (and) Hexylene Glycol	DD Chemco
6	7.75	Permethyl® 99A	Isododecane	Presperse

100

Description:

This gel blush contains CXG-1103 which imparts a creamy, gel texture to the product. The Silane (11S) Treated Pigments disperse easily, give slip and adhere to skin. ELIGHT SDS elastomer powder gives a soft focus effect with a luxurious creamy texture. KOBOGUARD® 5400 IDD gives a waterproof film.

Velvet Foundation with FAS Dispersions

Formula KLF-119A

Part	Percent	Ingredients	INCI Name	Supplier
1	12.00	CSV-3000	Cyclopentasiloxane	NuSil/Kobo Products
	9.50	FAS70USI-E	Titanium Dioxide (And) Cyclopentasiloxane (And) PEG/PPG-18/18 Dimethicone (And) Triethoxycaprylylsilane (And) Tocopheryl Acetate	Kobo Products
	6.00	MST-547	Polymethylsilsesquioxane	Kobo Products
	3.42	FAS50EYSI-E	Iron Oxides (C.I. 77492) (And) Cyclopentasiloxane (And) PEG/PPG-18/18 Dimethicone (And) Triethoxycaprylylsilane (And) Tocopheryl Acetate	Kobo Products
	1.00	SF1540	Cyclopentasiloxane (And) PEG/PPG-20/15 Dimethicone	Momentive
	0.76	FAS55ERSI-E	Iron Oxides (C.I. 77491) (And) Cyclopentasiloxane (And) PEG/PPG-18/18 Dimethicone (And) Triethoxycaprylylsilane (And) Tocopheryl Acetate	Kobo Products
	0.24	FAS60EBSI-E	Iron Oxides (C.I. 77499) (And) Cyclopentasiloxane (And) PEG/PPG-18/18 Dimethicone (And) Triethoxycaprylylsilane (And) Tocopheryl Acetate	Kobo Products
2	0.65	Crill 6	Sorbitan Isostearate	Croda
	0.65	Arlacel™ 80	Sorbitan Oleate	Croda
	0.10	Propyl Paraben NF	Propylparaben	International Sourcing
3	18.03	Deionized Water	Water	
	0.76	Sodium Chloride	Sodium Chloride	Morton Salt
	0.10	Methyl Paraben NF	Methylparaben	International Sourcing
4	0.95	Syncrowax BB-4	Synthetic Beeswax	Croda
	0.95	Syncrowax ORM	Sorbitol/Sebacic Acid Copolymer Behenate	Croda
	0.10	Vitamin E Acetate	dl-alpha Tocopherol	BASF
5	20.90	CXG-1103	Cyclopentasiloxane (And) Cyclohexasiloxane (And) Dimethicone/Vinyl Dimethicone Crosspolymer	NuSil/Kobo Products
	11.40	CXG-1104	Dimethicone (And) Dimethicone/Vinyl Dimethicone Crosspolymer	NuSil/Kobo Products
6	12.00	MSS-500/N	Silica	Kobo Products
7	0.50	Phenoxyetol	Phenoxyethanol	Clariant

100

Description:

This foundation has a velvet-like texture that applies smoothly onto the skin. Kobo's FAS Dispersions provide good coverage and are easy to disperse into the formula. MSS-500/N and MST-547 give an excellent application and soft focus effect to help fill in lines and wrinkles. The key to this unique mousse is the use of CXG-1103 and CXG-1104, which gives the lightweight mousse texture.

Color Dispersions

New PT1BM Dispersions

- **Carrier: Phenyl Trimethicone**
 - >High Refractive Index
 - >Low Centistoke
- **Pigment Treatment**
 - >Isopropyl Titanium Triisostearate (ITT)
- **Imparts Gloss, Softness and Shine**
- **Unique Sensory Profile**
- **Contributes to Transfer-Resistance and Long Wear**
- **Patent-Pending**



PTBM150Y5A

Anhydrous Mascara with PT1BM60B

Formula KMA-060A

Part	Percent	Ingredients	INCI Name	Supplier
1	20.60	CPF-3300@10cSt	Phenyl Trimethicone	NuSil/Kobo Products
	5.00	CPF-3300@20cSt	Phenyl Trimethicone	NuSil/Kobo Products
	3.90	COMPOSITE ACCB-33	Kaolin (And) Black 2 (And) Acrylates Copolymer (And) Sodium Polyacrylate	Kobo Products
	1.80	CELL-U-LASH 40	Cellulose	Kobo Products
	1.80	CELL-U-LASH 90	Cellulose	Kobo Products
	1.80	SPC/BLACK NF-12	Iron Oxides (C.I. 77499) (And) Ethylene/Methacrylate Copolymer (And) Isopropyl Titanium Triisostearate	Kobo Products
	0.30	DSPCS-12	Silica (And) Ethylene/Methacrylate Copolymer (And) Isopropyl Titanium Triisostearate	Kobo Products
2	10.00	Butylene Glycol	Butylene Glycol	Ruger Chemical
	6.40	Propylene Glycol	Propylene Glycol	Ruger Chemical
	6.00	Glycerin U.S.P. Natural 96%	Glycerin	Ruger Chemical
	1.60	Jeesorb L-20	Polysorbate 20	Jeen International
	0.50	Butyl Paraben NF	Butylparaben	International Sourcing
	0.15	Germall® 115	Imidazolidinyl Urea	ISP
	3	19.90	PT1BM60B	Iron Oxides (C.I. 77499) (And) Phenyl Trimethicone (And) Distearidimonium Hectorite (And) Isopropyl Titanium Triisostearate (And) Silica (And) 1,2-Hexanediol (And) Caprylyl Glycol
7.20		Beeswax White SP 422P	Beeswax	Strahl & Pitsch, Inc.
4.00		Performalene™ M 70 Wax	Synthetic Wax	New Phase Technologies
3.20		Carnauba Wax SP 63P	Copernicia Cerifera (Carnauba) Wax	Strahl & Pitsch, Inc.
2.40		Candelilla Wax SP 75	Euphorbia Cerifera (Candelilla) Wax	Strahl & Pitsch, Inc.
2.40		Dermofat 4919	Stearic Acid	Alzo International
0.80		Liposorb® SQO	Sorbitan Sesquioleate	Vantage
0.25		THIXIN® R	Trihydroxystearin	Elementis Specialties

100

Description:

This Anhydrous Mascara features Kobo's New PT1BM dispersion, **PT1BM60B**. This dispersion is easy to use, offering good spreadability and a silky feel. Kobo's non-nano carbon black, **COMPOSITE ACCB-33**, is used for intense, deep, black color and volumizing properties. Kobo's Microsphere Complex, **DSPCS-12**, is lightweight and provides volume to the lash. **SPC/BLACK NF-12**, hollow microsphere complex with ITT, adds a building effect to the lashes. **CELL-U-LASH 90** imparts length and **CELL-U-LASH 40** provides volume. Nusil's Phenyl Trimethicone **CPF-3300@10cSt** and **CPF-3300@20cSt**, are silicone fluids that can improve spreadability and the formula's feel upon application.

Color Dispersions

INBP Dispersions

- *Deep Color Intensity*
- *High Solids® Concentration*
- *Full Color Development*
- *Iron Oxides, TiO₂, Organic Pigments*



Midnight Marsala Liquid Lipstick

CCL-07

Formulation Data Sheet

Complete our CareSil skin care routine with a bold color to enhance your perfect complexion! This liquid lipstick will form a bright and long lasting film provided by our high viscosity gum CSF-3504. Super easy and fresh during application, it is also very comfortable to wear and non tacky, all thanks to our encapsulated elastomer CES-1104.

	Ingredient	INCI Nomenclature	Supplier	%
Phase A	Deionized Water	Water	-	34.15
	EjetaBD	Disodium EDTA	BASF	0.05
	NaCl	Sodium Chloride	-	0.8
	Euxyl PE 9010	Phenoxyethanol (and) Ethylhexylglycerin	Schulke	0.5
	Glycerin	Glycerin	-	3.0
Phase B	CSF 3504	Dimethiconol (and) Dimethicone	NuSil	4
	CSF 3100 @ 20cSt	Dimethicone	NuSil	12
	CPF 3300 @ 20cSt	Phenyltrimethicone	NuSil	15.0
	CSS-7302	PEG 10 Dimethicone	Nusil	3
Phase C	Bentone 38V	Disteardimonium Hectorite	Elementis	0.5
Phase D	KTZ Crimson	Mica (and) Titanium Dioxide (and) Iron Oxides (C.I. 77491) (and) Carmine	Kobo Products	3.0
	FAS55ERSI-E	Iron Oxides (C.I. 77491) (and) Cyclopentasiloxane (and) PEG/PPG-18/18 Dimethicone (and) Triethoxycaprylylsilane (and) Tocopherol Acetate	Kobo Products	1.0
	INBP50R33A	Red 33 Lake (and) Isononyl Isononanoate (and) Isopropyl Myristate (and) Stearalkonium Hectorite (and) Polyhydroxystearic Acid (and) Isopropyl Titanium Triisostearate (and) Propylene Carbonate	Kobo Products	6.0

Pigments - KoboGel

Kobo Products has developed a series of new products called KoboGel to help formulators expand on enriching foundation-type formulas while shade matching with ease.

KoboGel Aqua

- Pre-Dispersed Color Composites in a Hydrophilic Gel
- Light, Medium and Dark Combinations
- Contributes to sensorial textures providing a light and smooth initial application followed by a velvety after feel in water based systems
- Delivers optical enhancement by imparting a “soft focus” effect to hide imperfections



KoboGel D5

- Pre-Dispersed Color Composites in a Unique Elastomer Gel
- Light, Medium and Dark Combinations
- Ease of Color Additions into Formulations
- Enriches Formulas with a Silky, Spreadable Feel
- Imparts a “Soft focus” effect to hide imperfections on the skin’s surface

Light, Medium and Dark Combinations

Pigment Loading:
30 - 35%
Suggested Use Level:
1-60%

O/W KoboGel Aqua Medium Liquid Foundation

Formula KLF-190

Part	Percent	Ingredients	INCI Name	Supplier
1	17.30	Deionized Water	Water	
	1.10	Di-Sodium Tetraborate Decahydrate	Sodium Borate	EMD Chemicals Inc.
	0.60	Eumulgin® SG	Sodium Stearoyl Glutamate	BASF
	0.30	CITRIC ACID USP ANHYDROUS FINE GRANULAR	Citric Acid	VWR Scientific Products
2	3.90	Glycerin U.S.P. Natural 96%	Glycerin	Ruger Chemical
	0.25	Keltrol® CG	Xanthan Gum	CP Kelco
3	25.20	Dermol 25B	C12-15 Alkyl Benzoate	Alzo International Inc.
	3.90	Lipo Polyglycol® 400	PEG-8	Vantage
	3.00	SunBoost ATB™	Argania Spinosa Kernel Oil (And) Tocopheryl Acetate (And) Bisabolol	Kobo Products
4	29.60	KoboGel Aqua Medium	Glycerin (And) Dimethicone (And) Water (And) Titanium Dioxide (And) Iron Oxides (And) Pentylene Glycol (And) Dimethicone/Vinyl Dimethicone Crosspolymer (And) Silica (And) Polysorbate 20 (And) Amodimethicone (And) Carbomer (And) Sodium Hydroxide (And) Disodium Edta (And) Aluminum Hydroxide	Kobo Products
5	4.00	SESQ-CL3	Zea Mays (Corn) Starch (And) Polymethylsilsesquioxane (And) Polypropylsilsesquioxane (And) Aminopropyl Dimethicone	N&M/Kobo Products
6	4.00	DAITOSOL 5000SJ	Acrylates/Ethylhexyl Acrylate Copolymer (And) Water	Daito/ Kobo Products
	0.85	Phenoxetol®	Phenoxyethanol	Clariant
7	5.00	MSS-500/20N	Silica	Kobo Products
	1.00	MSS-500/3H	Silica	Kobo Products

100

Description:

This O/W Liquid Foundation features KoboGel Aqua Medium. KoboGel Aqua is a series of color composites available in light, medium, and dark combinations. Use of these products aids in color matching and enriches aqueous based formulas. A light and smooth texture can be felt upon initial application followed by a velvety afterfeel. They also impart a “soft focus” effect and help to hide imperfections on the skin’s surface. The foundation also includes SunBoost ATB™, a proprietary blend of antioxidant, anti-irritant and anti-inflammatory agents. SESQ-CL3 is responsible for soft focus effect and enhanced feel. MSS-500/20N is a silica microsphere that offers a ball-bearing effect which will impart finished products with an elegant silky texture, increased payoff, and enhanced slip which promotes better blendability on the skin. MSS-500/3H, a porous silica microsphere, can offer a dry touch and matte effect to the formulation.

KoboGel D5 Serum Foundation

Formula KLF-181

Part	Percent	Ingredients	INCI Name	Supplier
1	51.20	KoboGel D5 Medium	Cyclopentasiloxane (And) Titanium Dioxide (And) Cyclohexasiloxane (And) Iron Oxides (C.I. 77492) (And) Iron Oxides (C.I. 77491) (And) PEG/Ppg-18/18 Dimethicone (And) Iron Oxides (C.I. 77499) (And) Dimethicone/Vinyl Dimethicone Crosspolymer (And) Disteardimonium Hectorite (And) Tocopheryl Acetate (And) Isopropyl Titanium Triisostearate (And) Triethoxysilylethyl Polydimethylsiloxyethyl Dimethicone	Kobo Products
2	24.00	Protachem CTG	Caprylic/Capric Triglyceride	Protameen Chemicals
	0.90	Euyl® PE 9010	Phenoxyethanol (And) Ethylhexylglycerin	Schulke & Mayr
3	12.00	GMS-TTB4	Mica (And) Isopropyl Titanium Triisostearate (And) Triethoxysilylethyl Polydimethylsiloxyethyl Dimethicone	Kobo Products
	11.00	MSP-TK04	Polymethylsilsesquioxane (And) Titanium Dioxide	Nikko Rica/Kobo Products
	0.90	CARESS® BN06	Boron Nitride	Bent Tree/Kobo Products
	100			

Description:

KoboGel D5 composites are available to match skin tone shades for easy color additions to formulations. The *KoboGel D5* composite dispersion imparts soft focus and aids in long wear. *MSP-TK04* provides the formula with a smooth texture while *GMS-TTB4* offers a velvet-like texture. *CARESS® BN06*, boron nitride, is used for superior softness and tactility, superb spreadability, and good coverage.

KoboGel D5 W/Si Concealer with SPF

Formula KCC-013

Part	Percent	Ingredients	INCI Name	Supplier
1	25.00	KoboGel D5 Light	Cyclopentasiloxane (And) Titanium Dioxide (And) Cyclohexasiloxane (And) Iron Oxides (C.I. 77492) (And) Iron Oxides (C.I. 77491) (And) PEG/Ppg-18/18 Dimethicone (And) Iron Oxides (C.I. 77499) (And) Dimethicone/Vinyl Dimethicone Crosspolymer (And) Disteardimonium Hectorite (And) Tocopheryl Acetate (And) Isopropyl Titanium Triisostearate (And) Triethoxysilylethyl Polydimethylsiloxyethyl Dimethicone	Kobo Products
	10.00	HBP45TEL	Butyloctyl Salicylate (And) Titanium Dioxide (And) Alumina (And) Silica (And) Stearic Acid (And) Polyhydroxystearic Acid	Kobo Products
	8.80	CSV-3000	Cyclopentasiloxane	NuSil/Kobo Products
	2.50	CSS-7300	Cyclopentasiloxane (And) PEG/PPG-18/18 Dimethicone	NuSil/Kobo Products
	2.00	CSS-7302	PEG-10 Dimethicone	NuSil/Kobo Products
2	41.00	Deionized Water	Water	
	3.00	Glycerin U.S.P. Natural 96%	Glycerin	Ruger Chemical
	1.00	Sodium Chloride	Sodium Chloride	Morton Salt
	1.00	Jeecide CAP-5	Phenoxyethanol (And) Caprylyl Glycol (And) Potassium Sorbate (And) Water (And) Hexylene Glycol	Jeen International
	0.50	Tween™ 20	Polysorbate 20	Croda
3	5.00	SEQ-White1	Polymethylsilsesquioxane (And) Polyphenylsilsesquioxane	N&M/Kobo Products
4	0.20	SPC/KTZ INTERVAL GOLD-I2	Mica (And) Titanium Dioxide (And) Ethylene/Methacrylate Copolymer (And) Isopropyl Titanium Triisostearate	Kobo Products
	100			

Description:

This is a liquid W/Si concealer that showcases the benefits and ease of use of *KoboGel D5 Light*. *KoboGel D5* not only aids in color matching by simplifying color additions into formulations but also enriches formulas with a silky and spreadable feel. Also in this concealer are *CSS-7302* and *CSS-7300*, which are effective W/Si emulsifiers. Kobo's titanium dioxide dispersion, *HBP45TEL*, helps achieve a broad spectrum SPF. *SEQ-White1* helps to give a powdery after feel and soft focus effect, while *SPC/KTZ INTERVAL GOLD-I2* gives a subtle illuminating effect on skin.

Pigments - KTZ® Pearls

KTZ® Pearlescent Pigments

- Innovative and Unique Special Effect Pigments Primarily Consisting of a Natural Mica Substrate Coated with TiO₂ or Iron Oxide
- White, Interference, Two-Tone, Spectral Majesty, Earth Tone and Multicolor Pigments
- A Variety of Particle Sizes (5-200µm) Available; Low Gloss Matte to High Gloss Shimmer
- Color Correction on Various Skin Tones



Bouncy Peach Blush

Formula KBL-015

Part	Percent	Ingredients	INCI Name	Supplier
1	10.00	ASO-I2	Aluminum Starch Octenylsuccinate (And) Isopropyl Titanium Triisostearate	Kobo Products
	6.05	SERICITE GMS-4C	Mica	Kobo Products
	4.00	BTD-401	Titanium Dioxide (And) Isopropyl Titanium Triisostearate	Kobo Products
	2.00	BRO-I2	Iron Oxides (C.I. 77491) (And) Isopropyl Titanium Triisostearate	Kobo Products
	0.75	RED 28AL U-I3	Red 28 Lake (And) Isopropyl Titanium Triisostearate	Kobo Products
	0.10	Propyl Paraben NF	Propylparaben	International Sourcing
	0.10	Methyl Paraben NF	Methylparaben	International Sourcing
2	3.00	Wickenol 155	Ethylhexyl Palmitate	Alzo International Inc.
3	31.00	Wickenol 155	Ethylhexyl Palmitate	International Sourcing
	7.50	CPF-3300@20cSt	Phenyl Trimethicone	NuSil/Kobo Products
	5.50	Lameform® TGI	Polyglycerol-3 Diisostearate	Chem Specs/Cognis Corp.
	3.00	PM WAX 82	Polyethylene (And) Microcrystalline Wax	Toray/Kobo Products
	2.00	Softisan® 100	Hydrogenated Coco-Glycerides	Condea Chemie
	1.00	Microcrystalline Wax SP-89	Microcrystalline Wax	Strahl & Pitsch, Inc.
	1.00	KOBOGUARD® HRPC	Hydrogenated Polycyclopentadiene (And) Polyethylene (And) Copernicia Cerifera (Carnauba) Wax (And) Tocopherol	Kobo Products
1.00	Carnauba Wax SP 63P	Copernicia Cerifera (Carnauba) Wax	Strahl & Pitsch, Inc.	
4	8.50	KTZ® GOLD LAME	Mica (And) Titanium Dioxide (And) Iron Oxides (C.I. 77491)	Kobo Products
	8.50	KTZ® ARUBAN CORAL	Mica (And) Titanium Dioxide (And) Iron Oxides (C.I. 77491)	Kobo Products
	5.00	DSPCS/20N-I2	Silica (And) Ethylene/Methacrylate Copolymer (And) Isopropyl Titanium Triisostearate	Kobo Products

100

Description:

A blush with a unique bouncy texture that blends easily and provides buildable color to cheeks. Kobo's **SERICITE GMS-4C** and **ITT-Treated starch and pigments** provides the basis for the cream-to-powder texture. **DSPCS/20N-I2** contributes greatly to the powdery afterfeel. **PM WAX 82** is a combination of waxes used to structure the formula. **KOBOGUARD® HRPC** is a film former that gives good wear and adhesion. **CPF-3300@20cSt** is a phenyl trimethicone that increases spreadability and helps to improve the feel of the formula. **KTZ® GOLD LAMÉ** and **KTZ® ARUBAN CORAL** provide a light shimmer to this blush.

Gold Cooling Mousse Eye Shadow

Formula KEY-043-EU

Part	Percent	Ingredients	INCI Name	Supplier
1	80.30	Deionized Water	Water	
	1.50	Volarest™ FL	Acrylates/Beheneth-25 Methacrylate Copolymer	Croda
2	0.30	Potassium Hydroxyde 30%	Potassium Hydroxyde	Acros Organics
3	2.90	WSJ20EYAMP-O	Water (And) Acrylates/Ethylhexyl Acrylate Copolymer (And) Iron Oxides (C.I. 77492) (And) Sodium Acrylate/Sodium Acryloyldimethyl Taurate Copolymer (And) Aminomethyl Propanol	Kobo Products
	1.50	WSJ22ERAMP-O	Water (And) Acrylates/Ethylhexyl Acrylate Copolymer (And) Iron Oxides (C.I. 77491) (And) Sodium Acrylate/Sodium Acryloyldimethyl Taurate Copolymer (And) Aminomethyl Propanol	Kobo Products
	0.60	WSJ22BNF-O	Water (And) Acrylates/Ethylhexyl Acrylate Copolymer (And) Iron Oxides (C.I. 77499) (And) Sodium Acrylate/Sodium Acryloyldimethyl Taurate Copolymer (And) Aminomethyl Propanol	Kobo Products
4	2.00	Crodamol™ ISIS	Isostearyl Isostearate	Croda
5	3.00	KTZ® BRONZE	Mica (And) Iron Oxides (C.I. 77491)	Kobo Products
	1.50	KTZ® VIBRANT GOLD	Mica (And) Titanium Dioxide (And) Iron Oxides (C.I. 77491)	Kobo Products
	1.00	SP-10	Nylon-12	Toray/Kobo Products
	1.00	KTZ® UMBER	Mica (And) Iron Oxides (C.I. 77491)	Kobo Products
6	3.00	Glycerin	Glycerin	Interchimie
	1.00	Hydrolite® 5	Pentylene Glycol	Symrise
	0.20	SymDiol® 68	1,2-Hexanediol (and) Caprylyl Glycol	Symrise
	0.20	AQUA KEEP 10SH-NFC	Sodium Acrylates Crosspolymer-2	Kobo Products
100				

Description:

AQUA KEEP 10SH-NF, Sodium Acrylates Crosspolymer-2, is used to thicken and to give a nice texture to this gel. Aqueous WSJ Dispersions help to incorporate and disperse pigments into the water gel while offering a strong water resistant film. KTZ® BRONZE, KTZ® VIBRANT GOLD & KTZ® UMBER provide a bronze color and vibrant sparkle effect. SP-10 offers a creamy texture, gives glide upon application and an enhanced feel.

Eye Definition - Bronze Shimmer

Formula KEY-052A

Part	Percent	Ingredients	INCI Name	Supplier
1	22.00	SERICITE GMS-4C	Mica	Kobo Products
	12.00	CARESS® BN18	Boron Nitride	Bent Tree/Kobo Products
	10.00	CL-2080	Polyethylene	Kobo Products
	8.00	ZINC MYRISTATE	Zinc Myristate	Kobo Products
2	7.00	CSF-3100@350cSt	Dimethicone	NuSil/Kobo Products
	1.00	Euxyl® PE 9010	Phenoxyethanol (And) Ethylhexylglycerin	Schulke & Mayr
3	40.00	KTZ® BRONZE	Mica (And) Iron Oxides (C.I. 77491)	Kobo Products
100				

Description:

One stroke of this eye defining shadow showcases this formula's smooth laydown and luxurious color effect. SERICITE GMS-4C is a creamy mica that helps the formula glide onto the lid and offers a subtle sheen. CARESS® BN18 gives the formula a luxurious, velvety texture with a long-lasting effect. CL-2080 gives the formula a superb creamy texture. Addressing good compressibility for this powder, ZINC MYRISTATE, is used as a dry binder and texture enhancer, while CSF-3100@350cSt is the wet binder offering emolliency to the formula. KTZ® BRONZE gives this eye shadow the unique pearlized effect.

Film Formers - KOBOGUARD®

- Help to Enhance Adhesion and Substantivity of the Cosmetic Formulation to Skin, Lashes, Hair or Nail
- Improve Water Resistance and Rub Resistance
- Impart Gloss and Helps Suspend Pigments
- Excellent Color Stability make these Ideal Substitutes for Rosins and their Counterparts
- Odorless

Oil-Soluble Film Formers

KOBOGUARD® HRPC

- Ternary Wax Resin Composite
- Improves Transfer Resistance of Cosmetic Formulations
- Patent #US 8,679,464



KOBOGUARD® HRPC

KOBOGUARD® 5400 Series

- Improves Film Stability
- Contributes to Long Wear

Product Name	INCI Name	Active
KOBOGUARD® 5400 IDD	Hydrogenated Polycyclopentadiene (And) Isododecane	70%
KOBOGUARD® 5400 CCT	Hydrogenated Polycyclopentadiene (And) Caprylic/Capric Triglyceride	50%
KOBOGUARD® 5400 SQ	Hydrogenated Polycyclopentadiene (And) Squalane	50%

Long Lasting Cream Gel Eyeliner

Formula KEL-007-BR

Part	Percent	Ingredients	INCI Name	Supplier
1	20.00	PMLVP20CB	Isododecane (And) Isohexadecane (And) Black 2 (And) Lecithin (And) Polyhydroxystearic Acid (And) Ethylene/Propylene/Styrene Copolymer (And) Butylene/Ethylene/Styrene Copolymer	Kobo Products
	20.00	KOBOGUARD® 5400 IDD	Hydrogenated Polycyclopentadiene (And) Isododecane	Kobo Products
	15.00	Belsil TMS 803	Trimethylsiloxysilicate	Wacker
	8.00	Ozoquerita	Ozokerite Wax	Cosmotec
	6.00	PM WAX 82	Polyethylene (And) Microcrystalline Wax	Kobo Products
	5.00	NOMCORT® HK-G	Glyceryl Behenate/Eicosadioate	Ikeda/Kobo Products
	5.00	MSS-500W	Silica	Kobo Products
	5.00	COSMOL™ 222	Diisostearyl Malate	Ikeda/Kobo Products
2	16.00	Permethyl 99AD	Isododecane	Vantage
100				

Description:

This anhydrous long lasting eyeliner features KOBOGUARD® 5400 IDD, a film former that forms a water resistant film to provide long wear to this formula. PMLVP20CB is a dispersion of Black 2 in Isododecane, offering deep and intense color to this eye liner. COSMOL™ 222 is a pigment dispersant that offers great stability against oxidation. MSS-500W is a silica microsphere that improves payoff and allows the eye liner to have a smooth application. PM WAX 82 is a combination of waxes used to structure the formula, along with NOMCORT® HK-G, which is an oil gelling agent that can increase viscosity and improve formula stability.

Eyebrow Wax with ASG Treatment

Formula KMU-010

Part	Percent	Ingredients	INCI Name	Supplier
1	23.00	COSMOL™ 222	Diisostearyl Malate	Ikeda Corporation
	15.50	CIO	Cetyl Ethylhexanoate	Barnet
	10.00	Microcrystalline Wax SP-89	Microcrystalline Wax	Strahl & Pitsch
	10.00	KOBOGUARD® HRPC	Hydrogenated Polycyclopentadiene (And) Polyethylene (And) Copernicia Cerifera (Carnauba) Wax (And) Tocopherol	Kobo Products
	6.00	SILSOFT 034	Caprylyl Methicone	Momentive
	6.00	Ozokerite Wax White SP 1020P	Ozokerite	Strahl & Pitsch
	5.00	Permalene® PL Polyethylene	Polyethylene	New Phase
	5.00	Luvitol® Lite	Hydrogenated Polyisobutene	BASF
2	10.00	MICA S-ASG3	Mica (And) Stearoyl Glutamic Acid	Kobo Products
	4.30	BBO-ASG3	Iron Oxides (C.I. 77499) (And) Stearoyl Glutamic Acid	Kobo Products
	3.60	BRO-ASG3	Iron Oxides (C.I. 77491) (And) Stearoyl Glutamic Acid	Kobo Products
	1.40	BYO-ASG3	Iron Oxides (C.I. 77492) (And) Stearoyl Glutamic Acid	Kobo Products
	0.20	Methyl Paraben NF	Methylparaben	International Sourcing
100				

Description:

This formula gives structure and naturally highlights brows. This eyebrow wax features Kobo's **KOBOGUARD® HRPC** and **ASG** treated pigments. The **ASG** treatment helps the formula adhere and glide onto the brow, while **KOBOGUARD® HRPC** provides water resistance and can improve wear of the formula.

Non-Transfer Lipstick with **KOBOGUARD® HRPC**

Formula KLP-107

Part	Percent	Ingredients	INCI Name	Supplier	
1	25.00	KOBOGUARD® MQ65TMF	Trimethylsiloxysilicate (And) Methyl Trimethicone	Kobo Products	
	25.00	KOBOGUARD® HRPC	Hydrogenated Polycyclopentadiene (And) Polyethylene (And) Copernicia Cerifera (Carnauba) Wax (And) Tocopherol	Kobo Products	
	24.25	Ceraphyl® 368	Ethylhexyl Palmitate	ISP	
	7.25	INBP45R7C	Red 7 Lake (And) Isononyl Isononanoate (And) Isopropyl Myristate (And) Stearalkonium Hectorite (And) Isopropyl Titanium Triisostearate (And) Propylene Carbonate (And) Polyhydroxystearic Acid	Kobo Products	
	7.00	Candelilla Wax SP 75	Euphorbia Cerifera (Candelilla) Wax	Strahl & Pitsch, Inc.	
	5.00	SERICITE GMS-4C	Mica	Kobo Products	
	4.50	Ozokerite Wax White SP 1020P	Ozokerite	Strahl & Pitsch, Inc.	
	2.00	Microcrystalline Wax SP-89	Microcrystalline Wax	Strahl & Pitsch, Inc.	
	100				

Description:

This long-wear lipstick features a combination of resins to achieve long wear with a flexible film. **KOBOGUARD® HRPC** provides water resistance and can improve wear of the formulation. **KOBOGUARD® MQ65TMF** improves the adhesion of the formula onto the lips and helps to offer rub-resistance. **INBP45R7C** gives the formula an intense, vivid red shade. **SERICITE GMS-4C** provides a base to the color to further help boost color with a subtle luminosity.

Color Chalk

Formula KHP-011-BR

Part	Percent	Ingredients	INCI Name	Supplier
1	41.00	TALC AJM	Talc	Kobo Products
	30.00	GMS-FS	Mica (And) Perfluorooctyl Triethoxysilane	Kobo Products
	15.00	RED 6BA S8-I2	Red 6 Lake (And) Isopropyl Titanium Triisostearate	Kobo Products
	3.00	BRO-I2	Iron Oxides (C.I. 77491) (And) Isopropyl Titanium Triisostearate	Kobo Products
2	5.00	SALACOS® 99	Isononyl Isononanoate	Ikeda/Kobo Products
	5.00	KOBOGUARD® 5400 IDD	Hydrogenated Polycyclopentadiene (And) Isododecane	Kobo Products
	0.90	Phenoxyethanol	Phenoxyethanol	International Sourcing
	0.10	IPBC 10%	Iodopropynyl Butylcarbamate	International Sourcing
100				

Description:

This colored hair chalk is a pressed powder that is easy to apply using a sponge. TALC AJM is the vehicle of the formulation. GMS-FS provides long-lasting wear and ITT treated pigments offer a nice shade and improve adhesion. KOBOGUARD® 5400 IDD is a film former that offers long wear and SALACOS® 99 is used as a binder.

Plush Mascara

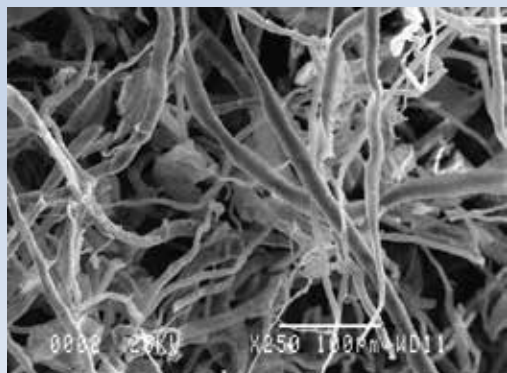
Formula KMA-053

Part	Percent	Ingredients	INCI Name	Supplier
1	7.50	Beeswax White SP 422	Beeswax	Strahl & Pitsch, Inc.
	7.00	Ozokerite Wax White SP 1020	Ozokerite	Strahl & Pitsch, Inc.
	3.00	Carnauba Wax SP 63	Copernicia Cerifera (Carnauba) Wax	Strahl & Pitsch, Inc.
	3.00	Dermofat 4919	Stearic Acid	Alzo International Inc.
	3.00	Microcrystalline Wax SP-89	Microcrystalline Wax	Strahl & Pitsch, Inc.
	2.00	KOBOGUARD® 5400 SQ	Hydrogenated Polycyclopentadiene (And) Squalane	Kobo Products
	1.00	Liposorb® SQO	Sorbitan Sesquioleate	Vantage
2	39.45	Deionized Water	Water	
	11.00	W60BBNFAP-O	Iron Oxides (C.I. 77499) (And) Water (And) Ammonium Polyacrylate	Kobo Products
	1.00	Triethanolamine 99	Triethanolamine	Dow Chemical
	0.30	Natrosol® 250 HHR CS	Hydroxyethylcellulose	Hercules/Aqualon
3	4.00	KNY-3D	Nylon-66 (And) Titanium Dioxide	Kobo Products
	1.00	Deionized Water	Water	
	1.00	DSPCS-I2	Silica (And) Ethylene/Methacrylate Copolymer (And) Isopropyl Titanium Triisostearate	Kobo Products
	0.60	Glydant Plus™	DMDM Hydantoin (And) Iodopropynyl Butylcarbamate	Lonza
	0.15	Germall® 115	Imidazolidinyl Urea	ISP
4	15.00	WSJ22BNF-O	Water (And) Acrylates/Ethylhexyl Acrylate Copolymer (And) Iron Oxides (C.I. 77499) (And) Sodium Acrylate/Sodium Acryloyldimethyl Taurate Copolymer (And) Aminomethyl Propanol	Kobo Products
100				

Description:

This mascara features Kobo's Nylon Fiber, KNY-3D, which gives a lengthening effect, while Kobo's Microsphere Complex, DSPCS-I2, is lightweight and provides volume to the lash without weight. Kobo's Resin Composite, KOBOGUARD® 5400 SQ, gives a quick build up with a water-resistant film and aids in long wear. Kobo's Pigmentary Dispersions, W60BBNFAP-O and WSJ22BNF-O, are used in combination to provide a deep black shade. The WSJ dispersion has film-forming properties. Both dispersions help to ease the manufacturing process.

Natural Fibers



CELL-U-LASH

Natural Fibers Fibers

- Promote Texturizing, Lengthening and Volumizing Effects

Cell-U-Lash

- Vary in Length from 30µm to 110µm
- Hydrophilic; Disperse Easily in Water
- Natural; Ecocert approved

Volumizing and Lengthening Long-Wearing Mascara with CELL-U-LASH

Formula KMA-038B

Part	Percent	Ingredients	INCI Name	Supplier
1	8.00	Beeswax White SP 422	Beeswax	Strahl & Pitsch, Inc.
	5.00	Ozokerite Wax White SP 1020	Ozokerite	Strahl & Pitsch, Inc.
	3.00	Carnauba Wax SP 63	Copernicia Cerifera (Carnauba) Wax	Strahl & Pitsch, Inc.
	3.00	Dermofat 4919	Stearic Acid	Alzo International
	3.00	Microcrystalline Wax SP-89	Microcrystalline Wax	Strahl & Pitsch, Inc.
	2.00	KOBOGUARD® 5400 SQ	Hydrogenated Polycyclopentadiene (And) Squalane	Kobo Products
	1.00	Liposorb® SQO	Sorbitan Sesquioleate	Vantage
2	39.95	Deionized Water	Water	
	12.00	W60BBNFAP-O	Iron Oxides (C.I. 77499) (And) Water (And) Ammonium Polyacrylate	Kobo Products
	1.00	Triethanolamine 99	Triethanolamine	Dow Chemical
	0.30	Natrosol® 250 HHR CS	Hydroxyethylcellulose	Hercules/Aqualon
3	2.50	CELL-U-LASH 40	Cellulose	Kobo Products
	2.50	CELL-U-LASH 90	Cellulose	Kobo Products
4	1.00	Deionized Water	Water	
	0.60	Glydant Plus™	DMDM Hydantoin (And) Iodopropynyl Butylcarbamate	Lonza
	0.15	Germall® 115	Imidazolidinyl Urea	ISP
5	15.00	WSJ22BNF-O	Water (And) Acrylates/Ethylhexyl Acrylate Copolymer (And) Iron Oxides (C.I. 77499) (And) Sodium Acrylate/Sodium Acryloyldimethyl Taurate Copolymer (And) Aminomethyl Propanol	Kobo Products

100

Description:

This mascara contains **CELL-U-LASH 90** to impart length and **CELL-U-LASH 40** to provide volume. Kobo resin composite, **KOBOGUARD® 5400 SQ**, gives a quick build up with a water-resistant film, and aids in long wear. Kobo's Pigmentary Dispersions, **W60BBNFAP-O** and **WSJ22BNF-O**, are used in combination to provide a deep black shade. The **WSJ** dispersion has film-forming properties.

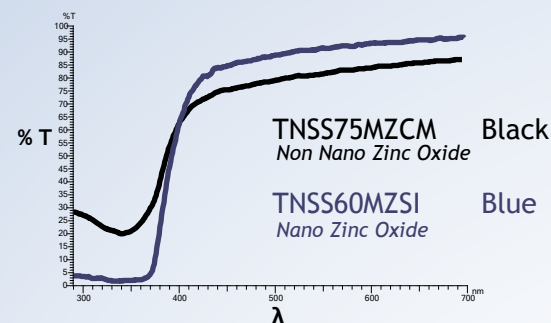


Suncare & SkinCare

TNSS Dispersions / SunBoost ATB

New TNSS75MZCM

- Non-Nano ZnO Dispersion
- UVA Protection Booster
- Offers Minimal Whitening
- Contains Ethylhexyl Methoxycrylene
>A Photostabilizing Product



Transmittance Curve
 Conditions: Concentration of ZnO: 0.005%
 Solvent: Chloroform
 Sonication: 10s in water bath
 Measured using integrated sphere

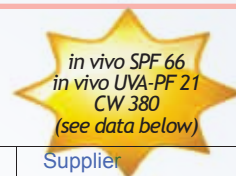


Argan Oil

SunBoost ATB™

- Proprietary Ratio of Anti-Oxidant, Anti-Irritant & Anti-Inflammatory Agents
- Boosts Both UVA/UVB Results Over 30% Each in Formulations

O/W Sunscreen with TNSS75MZCM Formula KSL-271



Part	Percent	Ingredients	INCI Name	Supplier
1	45.70	Deionized Water	Water	
2	5.00	Niacinamide USP, FCC Powder	Niacinamide	EMD Chemicals Inc.
	1.00	Liposorb® L-20	Polysorbate 20	Vantage
	0.20	Methyl Paraben NF	Methylparaben	International Sourcing
3	4.00	Glycerin U.S.P. Natural 96%	Glycerin	Cognis Corp.
	0.20	KELTROL® CG	Xanthan Gum	CP Kelco
4	9.80	TNSS75MZCM	Zinc Oxide (And) Ethylhexyl Methoxycrylene (And) C12-15 Alkyl Benzoate (And) Polyhydroxystearic Acid (And) Hydrogen Dimethicone	Kobo Products
	9.50	Dermol 25B	C12-15 Alkyl Benzoate	Alzo International Inc.
	8.65	HBP45TEL	Butyloctyl Salicylate (And) Titanium Dioxide (And) Alumina (And) Silica (And) Stearic Acid (And) Polyhydroxystearic Acid	Kobo Products
	5.00	SunBoost ATB™	Argania Spinosa Kernel Oil (And) Tocopheryl Acetate (And) Bisabolol	Kobo Products
	2.45	Lipopeg® 100-S	PEG-100 Stearate	Vantage
	1.00	Lipo® GMS 450	Glyceryl Stearate	Vantage
	0.40	Shea Butter	Shea Butter	Cognis Corp.
	0.10	Propyl Paraben NF	Propylparaben	International Sourcing
5	3.00	MSS-500W	Silica	Kobo Products
	1.00	Sepigel™ 305	Polyacrylamide (And) C13-14 Isoparaffin (And) Laureth-7	ChemUnion/SEPPIC
6	3.00	DAITOSOL 5000AD	Acrylates Copolymer (And) Water	Daito/Kobo Products

100

Description:

This O/W sunscreen features Kobo's non-nano Titanium Dioxide dispersion, **HBP45TEL**, to help achieve high SPF while offering minimal whitening without using a nanoparticle. Also featured is **TNSS75MZCM**, Kobo's non-nano Zinc Oxide dispersion, that contains Ethylhexyl Methoxycrylene to maintain the integrity of the UV filter and boost critical wavelength. **SunBoost ATB™**, which contains a proprietary ratio of anti-oxidants, anti-irritant and anti-inflammatory agents, helps boost SPF and PFA. Kobo's spherical silica microsphere, **MSS-500W**, gives slip during application and reduces shine on the skin.

O/W Sunscreen with TNSS75MZCM (no additional boosters)

Formula KSL-271A



Part	Percent	Ingredients	INCI Name	Supplier
1	53.70	Deionized Water	Water	
2	1.00	Liposorb® L-20	Polysorbate 20	Vantage
	0.20	Methyl Paraben NF	Methylparaben	International Sourcing
3	4.00	Glycerin U.S.P. Natural 96%	Glycerin	Cognis Corp.
	0.20	KELTROL® CG	Xanthan Gum	CP Kelco
4	23.15	Dermol 25B	C12-15 Alkyl Benzoate	Alzo International Inc.
	9.80	TNSS75MZCM	Zinc Oxide (And) Ethylhexyl Methoxycrylene (And) C12-15 Alkyl Benzoate (And) Polyhydroxystearic Acid (And) Hydrogen Dimethicone	Kobo Products
	2.45	Lipopeg® 100-S	PEG-100 Stearate	Vantage
	1.00	Lipo® GMS 450	Glyceryl Stearate	Vantage
	0.40	Shea Butter	Shea Butter	Cognis Corp.
	0.10	Propyl Paraben NF	Propylparaben	International Sourcing
	5	3.00	MSS-500W	Silica
	1.00	Sepigel™ 305	Polyacrylamide (And) C13-14 Isoparaffin (And) Laureth-7	ChemUnion/SEPPIC
100				

Description:

This O/W sunscreen features **TNSS75MZCM**, Kobo's Non-Nano Zinc Oxide dispersion, that contains Ethylhexyl Methoxycrylene to effectively increase SPF, UVA-PF and provide broad spectrum protection. Kobo's spherical silica microsphere, **MSS-500W**, gives slip during application and reduces shine on the skin.

Kid's Sunscreen

Formula KSL-303-BR



Part	Percent	Ingredients	INCI Name	Supplier
1	32.40	Deionized Water	Water	
	3.00	CES-1104	Dimethicone (And) Water (Aqua) (And) Glycerin (And) Pentylene Glycol (And) Dimethicone/Vinyl Dimethicone Crosspolymer (And) Amodimethicone (And) Carbomer (And) Phenoxyethanol (And) Sodium Hydroxide (And) Disodium Edta	Nusil/Kobo Products
	2.00	Glicerina	Glycerin	CAAL
2	19.00	EMP50TEL	Titanium Dioxide (And) Ethyl Macadamiate (And) Silica (And) Alumina (And) Stearic Acid (And) Polyhydroxystearic Acid	Kobo Products
	18.00	JOP80MZCJ	Zinc Oxide (And) Simmondsia Chinensis (Jojoba) Seed Oil (And) Polyhydroxystearic Acid (And) Jojoba Esters	Kobo Products
	11.00	SALACOS® 913	Iso-tridecyl Isononanoate	Ikeda/Kobo Products
	4.00	SALACOS® 99	Isononyl Isononanoate	Ikeda/Kobo Products
	3.60	SunBoost ATB™	Argania Spinosa Kernel Oil (And) Tocopheryl Acetate (And) Bisabolol	Kobo Products
	3.00	ABIL® EM 180	Cetyl PEG/PPG-10/1 Dimethicone	Evonik
	2.00	MST-547	Polymethylsilsesquioxane	Kobo Products
	1.00	Optiphen	Caprylyl Glycol (And) Phenoxyethanol	Ashland
	1.00	Liposorb® L-20	Polysorbate 20	Vantage
100				

Description:

This sunscreen was specially formulated for kids' skin because it features only non-nano, inorganic sunscreen dispersions **EMP50TEL** (Titanium Dioxide) and **JOP80MZCJ** (Zinc Oxide), to achieve balanced SPF and UVA protection. It also has **SunBoost ATB™**, a proprietary mixture of anti-oxidant, anti-irritant and anti-inflammatory agents that can increase UVA and UVB protection over 30%. **SALACOS® 99** and **SALACOS® 913** are light esters that improve spreadability and skin feel. **MST-547** is a non-absorbent silicone sphere and **CES-1104** is an encapsulated elastomer. Both of them help with spreadability, skin feel and reduction of tackiness.

Hair Mask

Formula KHP-014

Part	Percent	Ingredients	INCI Name	Supplier
1	79.00	Deionized Water	Water	
	2.50	Luviquat® PQ 11 PN	Polyquaternium-11	BASF
2	0.30	Celquat® H-100	Polyquaternium-4	Akzo Nobel
3	0.10	Citric Acid	Citric Acid	Universal Preserv-A-Chem
	0.10	Allantoin	Allantoin	ISP
4	3.60	Butylene Glycol	Butylene Glycol	Univar
	1.00	Triethanolamine 99	Triethanolamine	Dow Chemical
	0.10	Keltrol® CG	Xanthan Gum	CP Kelco
5	4.30	Lanette® O	Cetearyl Alcohol	Cognis Corp.
	3.50	Mineral Oil Carnation	Mineral Oil	Ruger Chemical
	2.30	SunBoost ATB™	Argania Spinosa Kernel Oil (And) Tocopheryl Acetate (And) Bisabolol	Kobo Products
	1.50	Eumulgin® B 2	Ceteareth-20	BASF
	1.00	CPF-3300@40cSt	Phenyl Trimethicone	NuSil/Kobo Products
	0.70	Germaben® II	Propylene Glycol (And) Diazolidinyl Urea (And) Methylparaben (And) Propylparaben	ISP
				100

Description:

This hair mask features SunBoost ATB™, which is a proprietary blend of anti-oxidant, anti-irritant and anti-inflammatory agents used in this formula for a moisturizing effect. CareSil™ CPF-3300@40cSt is a clear, high refractive index, low viscosity silicone that is easily incorporated into formulations and provides good slip during application.

Natural Anti-Aging Serum

Formula KFL-061

Part	Percent	Ingredients	INCI Name	Supplier
1	67.35	Deionized Water	Water	
2	3.00	Butylene Glycol	Butylene Glycol	Ruger Chemical
	0.40	Di-Sodium Tetraborate Decahydrate	Sodium Borate	EMD Chemicals Inc.
	0.15	Sodium Citrate	Sodium Citrate	DSM Nutritional Products
3	2.40	Glycerin U.S.P. Natural 96%	Glycerin	Ruger Chemical
	0.20	Keltrol® CG	Xanthan Gum	CP Kelco
4	7.00	Florasun 90	Helianthus Annuus (Sunflower) Seed Oil	Floratech
	6.00	Olivoil Avenate Emulsifier	Potassium Olivoyl Hydrolyzed Oat Protein (And) Cetearyl Alcohol (And) Glyceryl Oleate (And) Glyceryl Stearate (And) Aqua	Extracts & Ingredients
	5.00	SunBoost ATB™ Natural	Argania Spinosa Kernel Oil (And) Tocopheryl Acetate (And) Bisabolol	Kobo Products
	3.50	Joboba Oil	Simmondsia Chinensis (Jojoba) Seed Oil	Desert Whale
5	5.00	MSS-500W	Silica	Kobo Products
				100

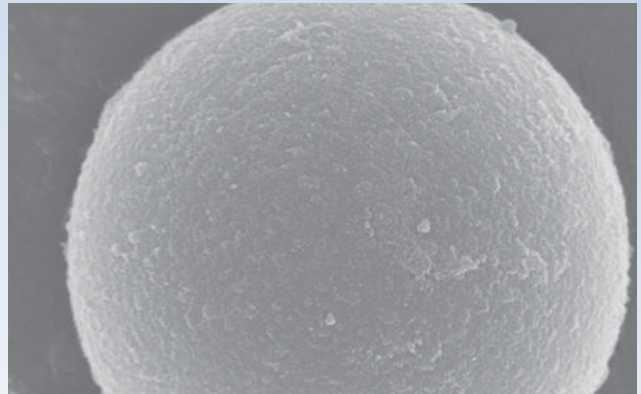
Description:

This natural anti-aging serum features SunBoost ATB™ Natural, a proprietary ratio of anti-oxidant, anti-irritant and anti-inflammatory agents. MSS-500W, spherical silica, gives slip during application and helps scatter light to diminish the look of fine lines on the skin.

Microspheres

Spherical Particles Offering

- *Soft Focus / Optical Blurring*
- *Improved Feel*
- *High Absorption (Porous Silica)*



SESQ-MH5

MSS-500 Series

- Silica
- Natural

EA-209

- 10µm Ethylene / Acrylic Acid Copolymer
- Use below 70 °C



SESQ-MH5

- 6µm Hydrophilic Silicone Resin

SP-10

- 10µm Nylon-12

MST-547

- 4.5µm Polymethylsilsesquioxane

Mattifying Stick

Formula KFL-054A-BR

Part	Percent	Ingredients	INCI Name	Supplier
1	10.00	COSMOL™ 222	Diisostearyl Malate	Ikeda/Kobo Products
	8.00	Ozoquerita	Ozokerite Wax	Cosmotec
	6.00	PM WAX 82	Polyethylene (And) Microcrystalline Wax	Kobo Products
	2.00	Beeswax	Beeswax	Cosmotec
	1.00	COSMOL™ 168ARV	Dipentaerythryl Hexahydroxystearate/Hexastearate/Hexarosinate	Ikeda/Kobo Products
2	20.00	MST-547	Polymethylsilsesquioxane	Kobo Products
3	41.00	CSV-3000	Cyclopentasiloxane	NuSil/Kobo Products
	5.00	MSS-500/3H	Silica	Kobo Products
	5.00	CXG-1104	Dimethicone (And) Dimethicone/Vinyl Dimethicone Crosspolymer	NuSil/Kobo Products
	2.00	Bentone Gel® VS5-PCV	Cyclopentasiloxane (And) Distearidmonium Hectorite (And) Propylene Carbonate	Cosmotec

100

Description:

This stick provides a matte effect by using **MST-547**, a non-absorbent silicone sphere that gives a soft focus effect and **MSS-500/3H**, a porous silica microsphere, that offers dry touch and matte effect. This product also contains **COSMOL™ 222**, a pigment dispersant that offers great stability against oxidation and **COSMOL™ 168ARV**, which has superior oxidative stability, miscibility, water retention, and emollience. **PM WAX 82** is a combination of waxes used to structure the formulation. **CXG-1104** is a silicone elastomer that provides a silky powdery feel.

Water-Based Primer with Aqupec MG N40R

Formula KFL-053

Part	Percent	Ingredients	INCI Name	Supplier
1	81.20	Deionized Water	Water	
2	5.00	Glycerin U.S.P. Natural 96%	Glycerin	Ruger Chemical
	3.00	Butylene Glycol	Butylene Glycol	ISP
	0.50	AQUPEC MG N40R	Sodium Carbomer	Sumitomo Seika/Kobo Products
	0.30	Germaben® II	Propylene Glycol (And) Diazolidinyl Urea (And) Methylparaben (And) Propylparaben	ISP
3	6.50	EA-209	Ethylene/Acrylic Acid Copolymer	Kobo Products
4	3.50	KTZ® Interfine Green	Mica (And) Titanium Dioxide	Kobo Products
100				

Description:

This water based primer features **AQUPEC MG N40R**, a sodium carbomer thickener that does not require neutralization. **EA-209** is responsible for soft focus effect and enhanced feel. **KTZ® INTERFINE GREEN** gives skin a subtle pearlized effect to improve complexion and illuminate the skin, while also helping to reduce the appearance of redness on the face.

Hydrating Face Cream

Formula KFL-092

Part	Percent	Ingredients	INCI Name	Supplier
1	58.15	Deionized Water	Water	
	4.75	SESQ-MH5	Polymethylsilsequioxane (And) Silica	N&M/Kobo Products
2	2.00	Glycerin U.S.P. Natural 96%	Glycerin	Van Waters and Rogers
	0.50	Keltrol® CG	Xanthan Gum	CP Kelco
3	10.00	LexFeel® 7	Neopentyl Glycol Diheptanoate	Ashland
	3.00	Protachem CTG	Caprylic/Capric Triglyceride	Protameen Chemicals
	3.00	MSS-500/3H	Silica	Kobo Products
	3.00	SALACOS® 99	Isononyl Isononanoate	Ikeda Corporation
	2.00	Dermofat 4919	Stearic Acid	Alzo International
	2.00	Polyaldo 10-1-0 K FG	Polyglyceryl-10 Oleate	Lonza
	1.50	Lanette® O	Cetearyl Alcohol	BASF
	4	5.40	CES-1104	Dimethicone (And) Water (Aqua) (And) Glycerin (And) Pentylene Glycol (And) Dimethicone/Vinyl Dimethicone Crosspolymer (And) Amodimethicone (And) Carbomer (And) Phenoxyethanol (And) Sodium Hydroxide (And) Disodium Edta
1.50		SP-500	Nylon-12	Toray/Kobo Products
5	2.00	Glycerin U.S.P. Natural 96%	Glycerin	Van Waters and Rogers
	0.30	AQUA KEEP 10SH-NFC	Sodium Acrylates Crosspolymer-2	Sumitomo Seika/Kobo Products
6	0.90	Phenoxetol®	Phenoxyethanol	Ashland
100				

Description:

This Face Cream features **AQUA KEEP 10SH-NFC** which gels the external water phase of the emulsion. Hydrophilic Silicone Resin, **SESQ-MH5**, offers a smooth application with good payoff and soft focus effect. **SP-500**, a polymer microsphere, offers a ball-bearing effect which will impart an elegant silky texture, increased payoff, and enhanced slip. Nusil's **CES-1104** is an encapsulated elastomer gel that can be added to the water phase or post emulsification. Upon application the encapsulated CES materials break and offer an initial refreshing feel that is followed by a velvety silicone after feel. Kobo's Microsphere, **MSS-500/3H**, is used to achieve better application.

FORMULATIONS

Product formulations are included as illustrative examples only. Kobo Products Inc. makes no representation or warranty concerning the efficacy or safety of any product manufactured using such formulations. All statements concerning the possible use of Kobo Products Inc. are for research purposes only. Responsibility for the performance or adequate testing of any product prior to sale or use of any such product lies with the manufacturer thereof.

USE OF PRODUCTS

Products sold by Kobo are designed, manufactured and sold for industrial use only. Prior to use of any such product for any application other than an industrial use, the user has the sole responsibility and obligation to determine the suitability of any such product for any such application.

PATENT STATUS

Nothing contained herein shall be construed to imply the nonexistence of any relevant patents or to constitute a permission, inducement or recommendation to practice any invention covered by any patent, without authority from the owner of the patent.

LIMITATION OF LIABILITY

Kobo Products Inc. shall in no event, whether the claim is based on warranty, contract, tort, strict liability, negligence or otherwise, be liable for incidental or consequential damages, or for any other damages in excess of the amount of the purchase price.

KOBO

*The Powder & Dispersion
Specialist*

www.koboproducts.com



KOBO PRODUCTS, INC.

3474 South Clinton Avenue
South Plainfield, NJ 07080 USA

Tel: +1 - 908 757 0033
fax: +1 - 908 757 0905



KOBO PRODUCTS, SAS

135 Rue Buissonniere Quartier
Bouysset 31670 Labège FRANCE

Tel: +33 - (0) 5 62 88 77 40
Fax: +33 - (0) 5 62 88 77 49



KOBO DISPATEK, INC

1-4-8 Nihombashi - bakurocho
Chuoko, Tokyo, 103-0002 JAPAN

Tel: +81 - 3 3663 8049
Fax: +81 - 3 3661 8679



KOBO BRASIL, LTDA.

Rua Bamboré n.41
Ipiranga - São Paulo/SP 04278-
060 BRASIL

Tel: +55 (11) 5062 6034