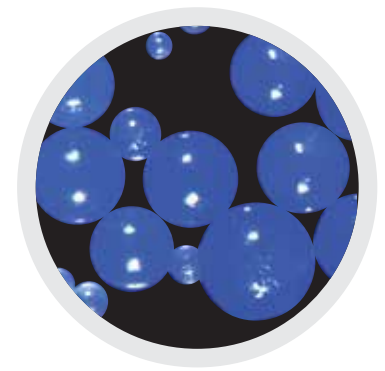


Natural Scrubbing Beads



Exfoliation is a great way to keep the skin healthy and is an essential component in a skin care routine. It helps remove dry skin through gentle scrubbing, improve skin softness, elasticity and glow, and remove dead skin cells that can block pores.

Small beads (size between 0.2 to 1 mm) are common exfoliating agents for personal care products, in particular in rinse-off formulations. Following the recent ban of plastic microbeads in several countries, Kobo Products is now offering a range of **Scrubbing Beads** derived exclusively from natural

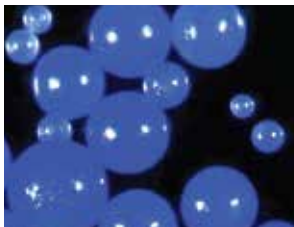
ingredients and completely plastic-free, for use in personal care products. The composition and size of these beads give exfoliation properties ranging from gentle to strong, allowing formulators to use them in a wide variety of products.

Product Name	INCI Name	Size (µm)	Properties
🌿 CELLULOBEADS D-200+++	Cellulose	150-200	Gentle Exfoliation for all Skin Types
🌿 CELLULOBEADS D-500	Cellulose	400-500	Larger Particle Size but still Gentle
🌿 KoboScrub™ SD-200	Silica	100-300	Strong Exfoliation
🌿 Ws-CWUMM	Copernicia Cerifera (Carnauba) Wax (And) Ultramarines	300-750	Traditional Colorful Exfoliation Provides Mild Scrubbing

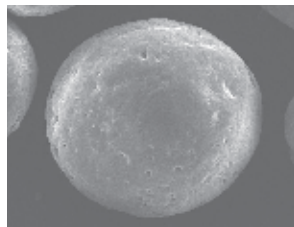
🌿 **Natural**



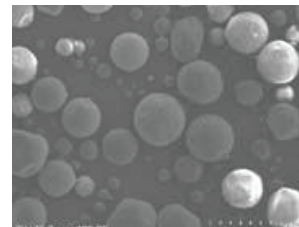
+++ Raw material approved by Ecocert in accordance with the Ecocert Standard



Ws-CWUMM



CELLULOBEADS D-200



CELLULOBEADS D-500

KOBO

USA - New Jersey
+1 (908) 757-0033

FRANCE - Labege
+33 (0)5-62-88-77-40

BRASIL - São Paulo
+55 (11) 5062-0634



KFL-143

Men's Natural Oil Scrub

Part 1

- **JOS10M5** - Kobo Products:
Simmondsia Chinensis (Jojoba) Seed Oil (And) Silica 93.74%
- **KoboScrub™ SD-200** - Kobo Products: *Silica* 5.00%
- **Euxyl® PE 9010** - Schulke & Mayr:
Phenoxyethanol (And) Ethylhexylglycerin 0.50%
- **KTZ® EBONY** - Kobo Products: *Iron Oxides (CI 77499) (And) Mica* 0.15%
- **KTZ® MISTERIOSO PEWTER** - Kobo Products:
Mica (And) Titanium Dioxide (And) Iron Oxides (CI 77499) 0.15%
- **CO60B** - Kobo Products: *Iron Oxides (CI 77499) (And) Ricinus Communis (Castor) Seed Oil (And) Isopropyl Titanium Triisostearate* 0.01%

Part 2

- **Hydra Men 32** - Givaundan/Brenntag: *Fragrance* 0.45%

Manufacturing Procedure

1. Combine Part 1 and side sweep until materials are evenly dispersed.
2. Add Part 2 under side sweep.

Description

This men's oil scrub features Kobo's Silica scrubbing beads, **KoboScrub™ SD-200**, which exfoliate the skin. Jojoba Oil gellant, **JOS10M5** makes up the base of the formulation and restores natural oils to the skin. The combination of **CO60B** with **KTZ® MISTERIOSO PEWTER** and **KTZ® EBONY** enhances the color effect in the component.

Massage scrubbing oil into skin and let sit for 10 minutes. Remove with warm, wet towel.



KLP-128

Lip Scrub with CELLULOBEADS D-200

Part 1

- **JOS10M5** - Kobo Products:
Simmondsia Chinensis (Jojoba) Seed Oil (And) Silica 59.50%
- **Shea Butter** - Cognis Corp: *Shea Butter* 7.00%
- **Protachem™ CTG** - Protameen: *Caprylic/Capric Triglyceride* 3.00%

Part 2

- **Bentone Gel® TN V** - Akzo/SACCI: *C12-15 Alkyl Benzoate (and) Stearalkonium Hectorite (and) Propylene Carbonate* 6.50%
- **CO40SS** - Kobo Products: *Sodium Saccharin (And) Ricinus Communis (Castor) Seed Oil (And) BHT* 0.50%

Part 3

- **Vitamin E Acetate** - DMS Nutritional: *dl-alpha Tocopherol* 0.30%
- **BHT Food Grade Crystal** - Protameen: *BHT* 0.10%

Part 4

- **MSS-500/3H** - Kobo Products: *Silica* 3.00%

Part 5

- **CELLULOBEADS D-200** - Daito/Kobo Products: *Cellulose* 20.00%

Part 6

- **INBP75EBR** - Kobo Products: *Iron Oxides (And) Isononyl Isononanoate (And) Isopropyl Myristate (And) Stearalkonium Hectorite (And) Polyhydroxystearic Acid (And) Isopropyl Titanium Triisostearate (And) Propylene Carbonate* 0.10%

Manufacturing Procedure

1. Prepare Part 1 and mix with a propeller mixer.
2. Heat Part 1 to 30°C and mix until shea butter is completely melted and dispersed.
3. Add Parts 2, 3, 4, 5 and 6 while mixing. Cool to room temperature.

Description

This is a lip scrub that does not use plastic scrubbing beads. Instead it features **CELLULOBEADS D-200**, cellulose scrubbing beads, providing gentle yet effective exfoliation to the delicate skin of lips. **JOS10M5** gives structure and emolliency to this lip scrub. **MSS-500/3H** contributes to formula stability. **CO40SS** is a sodium saccharin dispersion that gives a slight sweet taste. **INBP75EBR** gives a light brown tint to the formula.